

[2016-New Latest 70-246 PDF Dumps Free Download In GreatExam (1-15)

Good news, GreatExam has updated the 70-246 braindumps. With all the questions and answers in your hands, you will pass the Microsoft 70-246 exam easily. All the 70-246 dumps are updated and cover every aspect of the examination. Welcome to choose. QUESTION 1 Your company has a private cloud that contains two Active Directory forests named contoso.com and adatum.com. The contoso.com network and the adatum.com network are separated by a firewall. No trusts exist between the forests. You deploy System Center 2012 Operations Manager to adatum.com. You install agents on 100 servers in both forests. You need to ensure that you can monitor all 100 servers. The solution must minimize the traffic between the two networks. What should you install? (Each correct answer presents part of the solution. Choose all that apply.)

A. A server certificate on the gateway server in contoso.com
B. A gateway server in adatum.com
C. A server certificate on the gateway server in adatum.com
D. Client certificates on all of the servers in adatum.com
E. A gateway server in contoso.com
F. A server certificate on the management server in adatum.com
G. Client certificates on all of the servers in contoso.com
Answer: AEF
QUESTION 2 Drag and Drop Question Your company has a private cloud that is managed by using a System Center 2012 Operations Manager infrastructure. You need to ensure that members of a group named Group1 can resolve printing alerts by using the Operations Manager console. The solution must minimize the number of Operations Manager permissions assigned to Group1. Which three actions should you perform in sequence? (To answer, move the appropriate actions from the list of actions to the answer area and arrange them in the correct order.)

- Actions
- Import the Windows Server P Pack.
 - Create a Read-Only Operator
 - Create an event view.
 - Scope the user role.
 - Create an Operator user role.
 - Create a dashboard view.

Answer:

Actions	Answer Area
	Import the Windows Server Print Server Management Pack.
Create a Read-Only Operator user role.	Create an Operator user role.
Create an event view.	Scope the user role.
Create a dashboard view.	

www.greatexam.com

Explanation: 1. Import the Windows Server Print Server Management Pack - Required for monitoring printing <http://technet.microsoft.com/en-us/library/cc181012.aspx> 2. Create an Operator User Role - Required to add Group1 to SCOM 3. Scope the User Role - To set this role to access print alerts only No - Create an event viewer alert, technically feasible to set logging of print queues and then monitor events but Microsoft always asked for the BEST solution, hence the Print MP No - Create a Subscription, there is no mention of notifications in the question No - Create a run as account, the question says resolve the print ALERT not the fault itself
QUESTION 3 You need to recommend a solution to implement the planned changes for the research department. What should you include in the recommendation? (More than one answer choice may achieve the goal. Select the BEST answer.)
A. The existing VMM infrastructure
B. The existing Service Manager infrastructure
C. A solution that includes System Center 2012 App Controller
D. The existing Orchestrator infrastructure
Answer: A
Explanation: There is no existing SCSM infrastructure, App Controller is overkill, so use the existing VMM infrastructure.
QUESTION 4 Your company has a private cloud that contains a Microsoft ASP.NET application. The application is hosted by Internet Information Services (IIS) on a server named

Server1. The application is accessed by using multiple URLs. You configure a watcher node on a server named Server2. You need to ensure that an alert is generated each time the watcher node receives an HTTP error of 400 or more. The solution must ensure that the cause of the alert is captured. Which type of monitor should you create from the Operations Manager console? A. Windows ServiceB. ProcessC. Web Application Transaction MonitoringD. TCP Port Answer: C QUESTION 5Your company has a private cloud that is managed by using a System Center 2012 Operations Manager infrastructure. The network contains three devices. The devices are configured as shown in the following table

Device name	Type	Community string
Router1	SNMPv1	INTERNAL
Router2	SNMPv1	INTERNAL
Switch1	SNMPv2c	CONTOSO

You need to ensure that Operations Manager can discover all of the devices. What should you do? A. From the Operations Manager console, create one group and set the group to Dynamic Members.B. From the Operations Manager console, create two Run As Accounts.C. From the Operations Manager Shell, run the Set-SCOMUserRole cmdlet.D. From the Operations Manager Shell, run the Enable-SCOMDiscovery cmdlet. Answer: BExplanation:Each SNMPv3 device would need its own run as account.As there are no SNMPv3 devices in the list only v1/v2 we need just one run as account per different community string.As there are two different community strings used for the 3 devices we need two run as accounts.

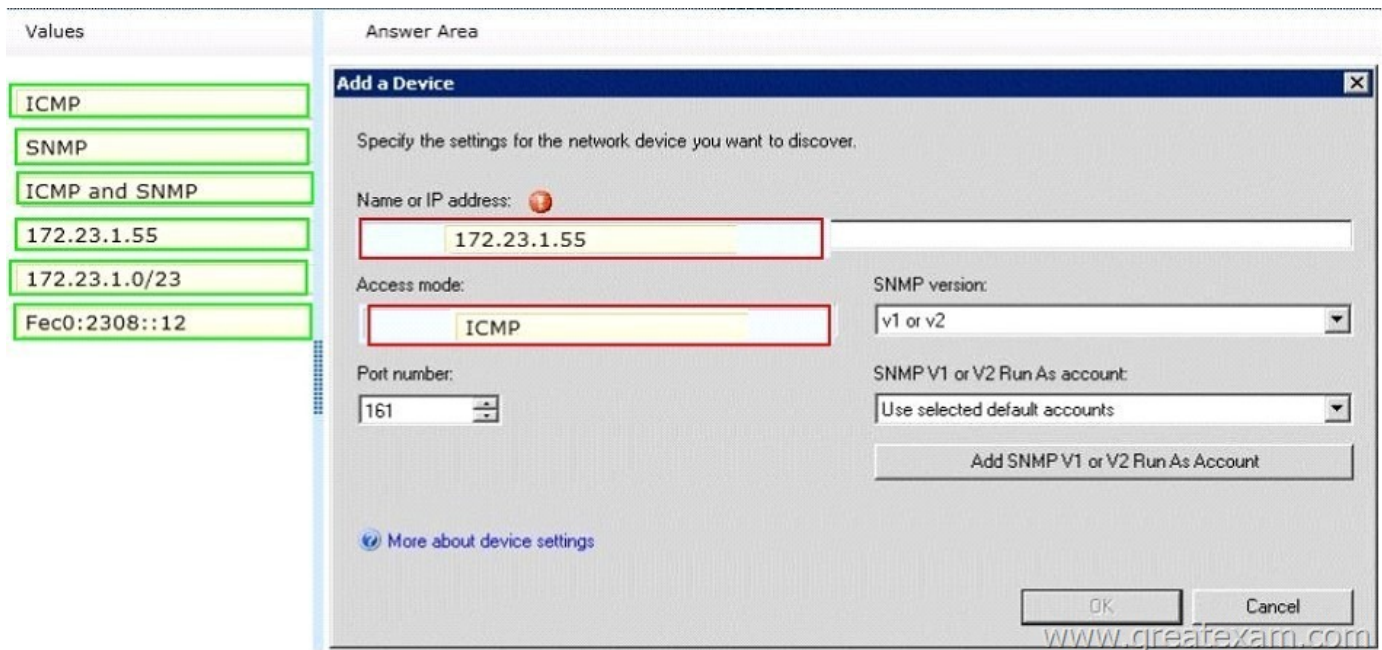
<http://technet.microsoft.com/en-us/library/hh212920.aspx> QUESTION 6Your company has a private cloud that is managed by using a System Center 2012 infrastructure. You have a web application named WebApp1 that is hosted in another datacenter. The datacenter is not part of the private cloud. You need to ensure that Service Manager incidents are generated automatically when WebApp1 is unavailable. What should you create? A. a Service Level Tracking objectB. an event ruleC. a synthetic transaction D. a service offering Answer: CExplanation:To monitor the application that runs on these traditional platforms we leverage custom MP's, synthetic transactions to be able to test websites, and HTTP probes to test web services ensuring that the outside-in functionality of the application is available.

<http://blogs.technet.com/b/server-cloud/archive/2012/03/29/using-system-center-2012-to-monitor-the-infrastructure-amp-application-layers-for-private-public-and-traditional-environments.aspx> QUESTION 7Drag and Drop QuestionYour company has a private cloud that is managed by using a System Center 2012 Operations Manager infrastructure. The infrastructure contains a management server named Server1. The network contains two subnets named Subnet1 and Subnet2. The two subnets are separated by a firewall that prevents SNMP communications. Server1 is located on Subnet1. A switch named Switch1 is located on Subnet2.Switch1 has the following configurations:- Network ID: 172.23.1.0/23- IPv4 address: 172.23.1.55- IPv6 address: fec0:2308::12You need to discover Switch1.What should you configure from the Computer and Device Management Wizard? To answer, drag the appropriate values to the correct locations in the answer area. (Each value may be used once, more than once, or not at all.)

Values

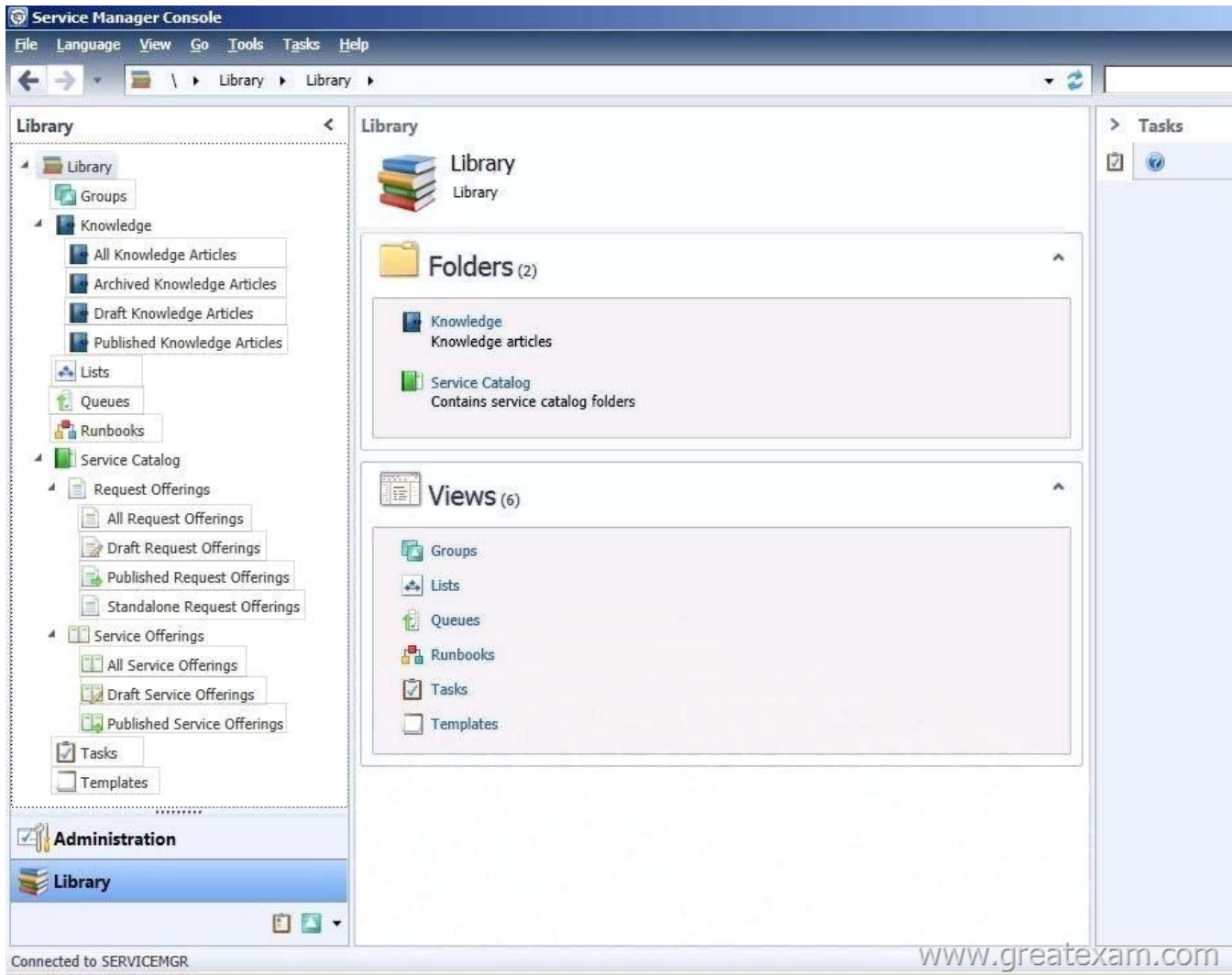
- ICMP
- SNMP
- ICMP and SNMP
- 172.23.1.55
- 172.23.1.0/23
- Fec0:2308::12

Answer:

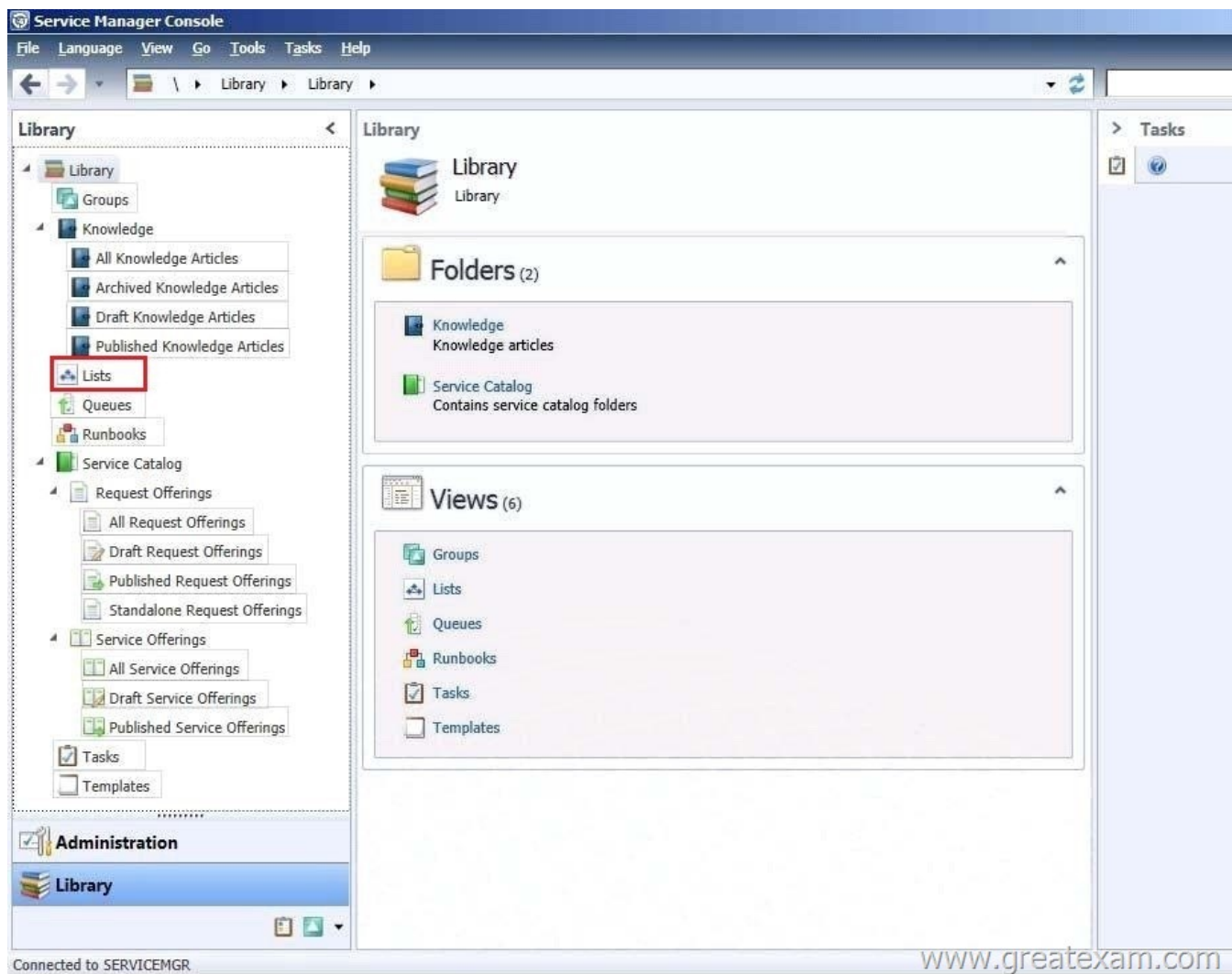


QUESTION 8 Your company has a private cloud that is managed by using a System Center 2012 Operations Manager infrastructure. The private cloud has a connection to a partner company. The connection uses a router named Router1. Router1 is owned by the partner company. The partner company's security policy states that only partner company network administrators can access the configuration information of the partner company's network devices. You need to monitor the availability of Router1. The solution must meet the security policy requirement. Which access mode should you configure to discover Router1? A. ICMP B. SNMPv3 C. SNMPv1 and SNMPv2 D. ICMP, SNMPv1, and SNMPv2 E. ICMP and SNMPv3 Answer: A Explanation: It says we must not access the configuration information of the partner company's network devices. So SNMP is not a choice, because it will give us just that. To monitor the availability, in other words the online/offline status of the device, we may use ICMP. Of course the device must answer to our ICMP requests like "ping", but that is not part of the question.

QUESTION 9 Hotspot Question Your company has a private cloud that contains a System Center 2012 Service Manager infrastructure. You create an incident template as shown in the exhibit. (Click the Exhibit button.) You need to add SMS as an available source in the incident template. What should you configure? To answer, select the appropriate configuration in the answer area.



Answer:

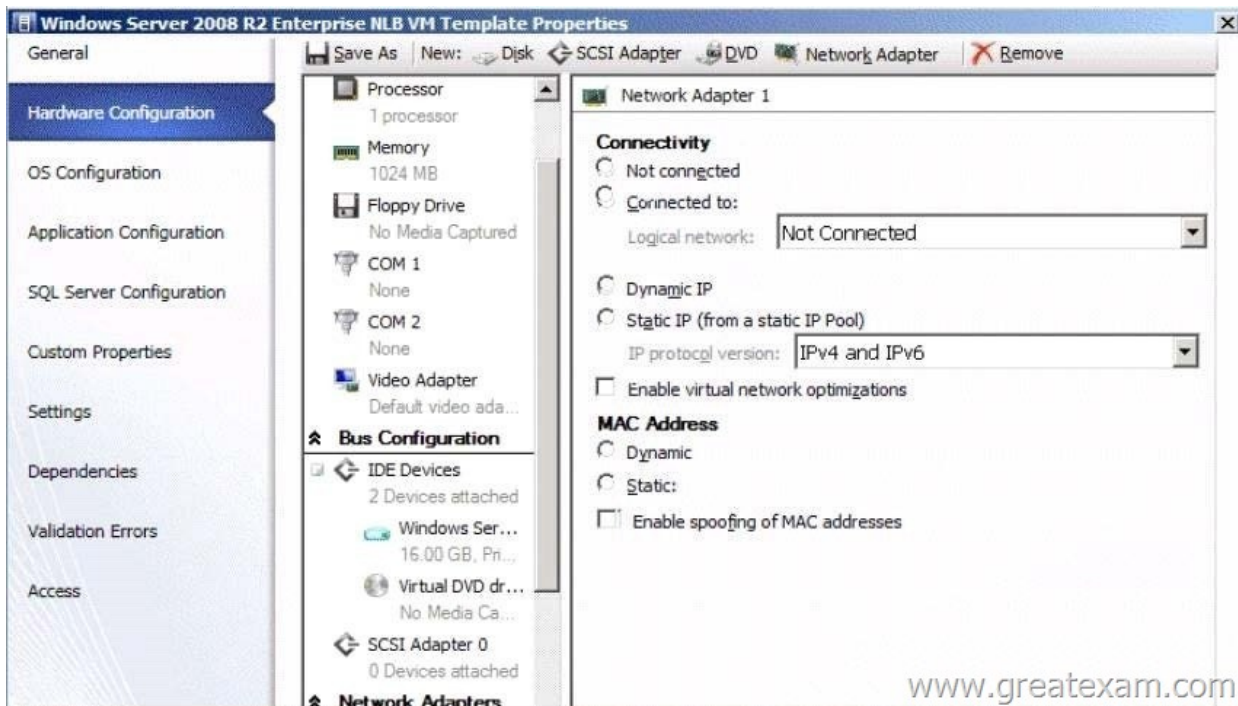


Explanation:

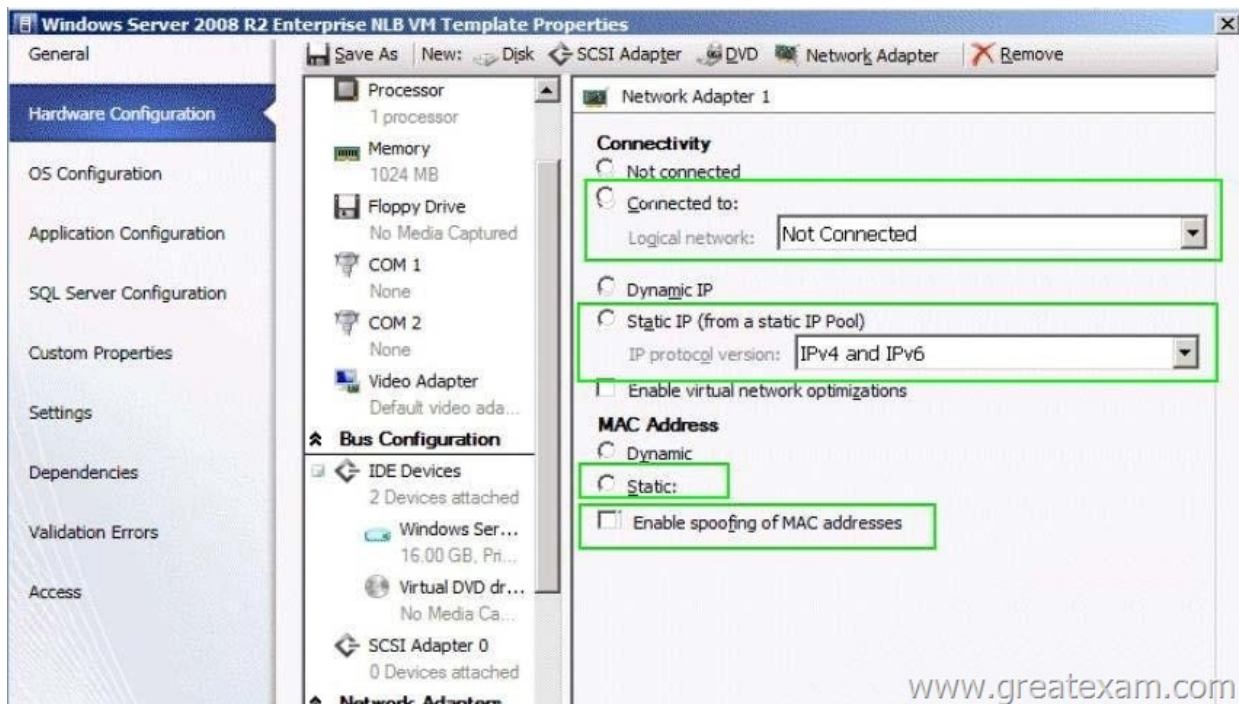
<http://social.technet.microsoft.com/Forums/systemcenter/en-US/81468b35-72dd-47e3-800f-3e16bf2c9aef/service-manager-2012-incident-source-editing?forum=systemcenterservicemanager>"This is found in the Library workspace, go to Lists, use the filter to find Incident Sources, click Add Item, scroll down and edit the new item name. That source will now be available to all IRs"

QUESTION 10 Your company has a private cloud that is managed by using a System Center 2012 infrastructure. The company defines the Service Level Agreement (SLA) for a web application as 99 percent uptime. You need to create service level objectives (SLOs) that meet the SLA requirement. Which object or objects should you create from the Service Manager Console? (Each correct answer presents part of the solution. Choose all that apply.) A. a queue B. a connector C. a channel D. a calendar E. a metric F. a subscription Answer: ADE Explanation: In SCSSM 2012 the Service Level Management offers a great opportunity to implement SLAs for different IT management processes. With the four components of SLA management you can build your own complex SLAs:- Queues -> Which work items are covered in the SLA - Calendar -> The service hours of an SLA - Metrics -> What is measured in the SLA - Service Level Objective -> Target of the SLA

<http://blogs.technet.com/b/servicemanager/archive/2012/01/25/scsm-2012-service-level-management.aspx> QUESTION 11 Hotspot Question Your company has a private cloud that is managed by using a System Center 2012 infrastructure. You plan to deploy a single-tier service to the private cloud. The service is configured to use Network Load Balancing (NLB). You need to create a Hardware Profile for the virtual machines that will be added to the service template. The solution must ensure that the virtual machines will use Windows Network Load Balancing. Which settings should you configure in the Hardware Profile? To answer, configure the four appropriate settings in the dialog box in the answer area.



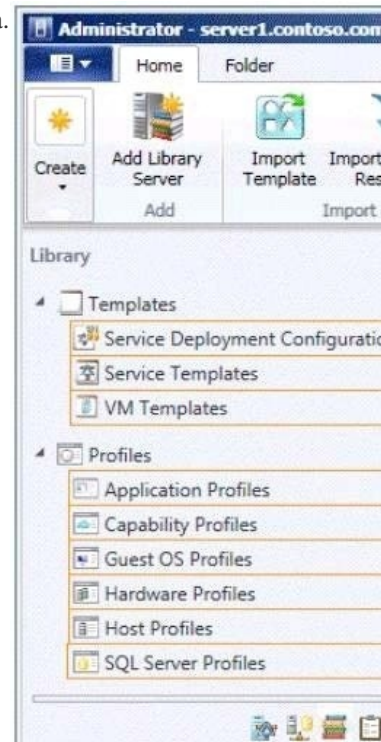
Answer:



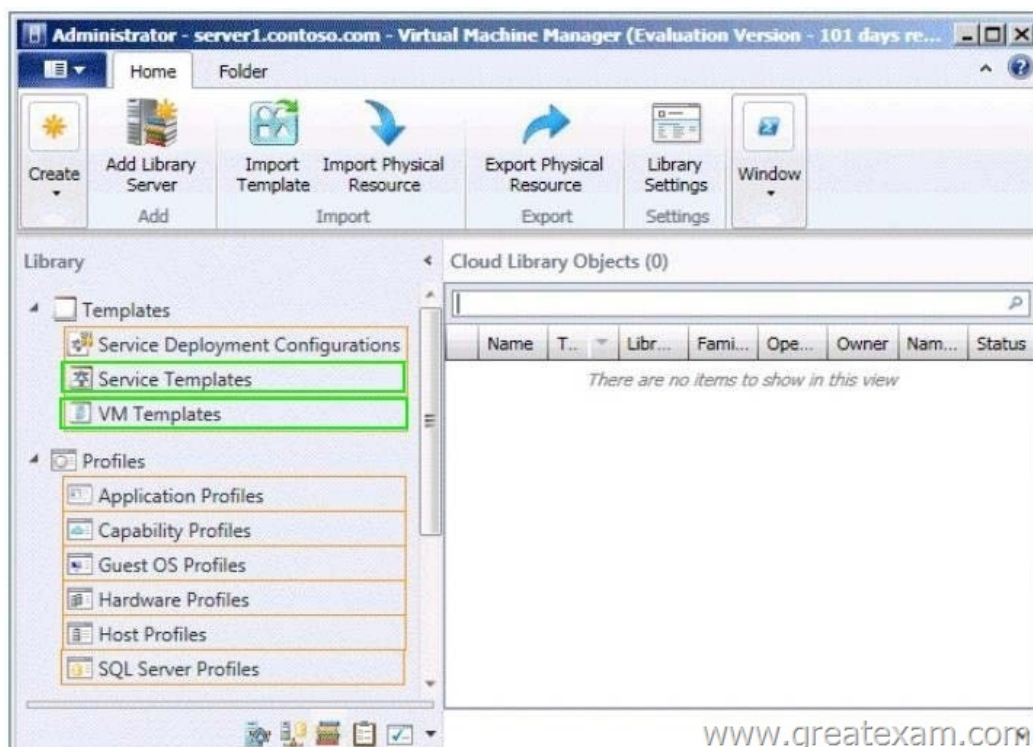
Explanation: <http://technet.microsoft.com/en-us/library/hh335098.aspx> QUESTION 12 You need to recommend a solution to meet the monitoring requirements for App2. Which Operations Manager management pack should you recommend importing? A. The VMM 2012 management pack B. The Windows Server Hyper-V Management Pack C. The Microsoft Application Virtualization 4.5 (App-V) Monitoring Management Pack D. The Monitoring Pack for Server App-V management pack Answer: D Explanation: Both MP's exist. And according to the download pages, only the Server App-V MP is for SCOM 2007 or later (which is also later released). So the answer should be D. <http://www.microsoft.com/en-us/download/details.aspx?id=23024> (only 2007)

<http://www.microsoft.com/en-us/download/details.aspx?id=30003> (2007 or later) QUESTION 13 Your company has a private cloud that contains a System Center 2012 Service Manager infrastructure. You need to create a service level objective (SLO) for incidents that have a priority value of 1. What should you create first? A. a service offering B. a subscription C. a service template D. a queue Answer: D Explanation: Queues are used in SCSM 2012 SLA Management to apply the SLA to a group of work items.

<http://blogs.technet.com/b/servicemanager/archive/2012/01/25/scsm-2012-service-level-management.aspx> QUESTION 14 Hotspot Questions Your company has a private cloud that is managed by using a System Center 2012 Virtual Machine Manager (VMM) infrastructure. The company has multiple departments. You need to deploy a two-tier web application to the departments. Which two library objects should you create? To answer, select the appropriate library objects in the answer area.



Answer:



Explanation: The key to the question is deploying many versions of the same two-tier application. A Service Template is required for this. Additionally you need a VM template to create a service template. QUESTION 15 Which of these answers is FALSE regarding System Center 2012 - Data Protection Manager (DPM)? A. It must be deployed in a Windows Server 2008 or a Windows Server 2003 Active Directory Domain Services directory services structure to support its protection and recovery operations. B. It does not support teamed network adapters (NICs) C. If you are protecting data over a wide area network (WAN),

there is a minimum network bandwidth requirement of 512 kilobits per second (Kbps).D. If there is not a two-way trust across domains, you must have a separate DPM server for each domain. Answer: BExplanation:DPM DOES support teamed network adapters, also called interface cards (NICs). Teamed NICs are multiple physical NICs that are configured to be treated as a single NIC by the operating system. Teamed NICs provide increased bandwidth by combining the bandwidth available using each NIC and failover to the remaining NIC or NICs when a NIC fails. DPM can use the increased bandwidth achieved by using teamed NICs on the DPM server. Microsoft 70-246 real exam questions are finished and summarized by our professional team, and corrected by senior IT experts. GreatExam Test 70-246 are the same as your actual test contents, all you need to do is studying the whole 70-246 real exam questions carefully before you take 70-246 exam. Then you can pass 70-246 exam and get certification easily.
<http://www.greatexam.com/70-246-exam-questions.html>